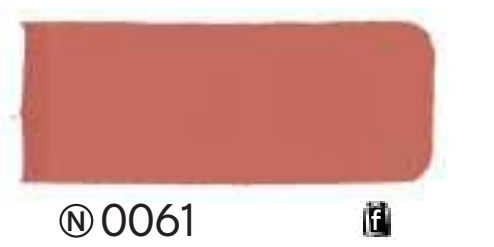




Ⓝ 0055



Ⓝ 0061



Ⓟ 0075



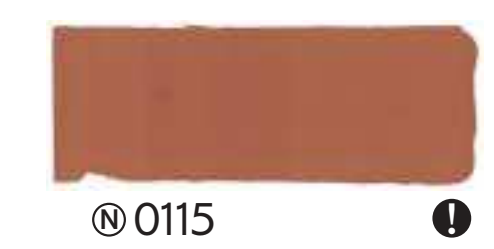
Ⓝ 0025



Ⓝ 0026



Ⓝ 0065



Ⓝ 0115



Ⓝ 0120



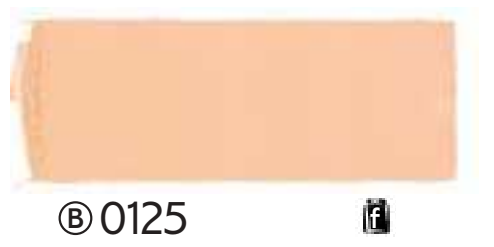
Ⓟ 0135



Ⓝ 0045



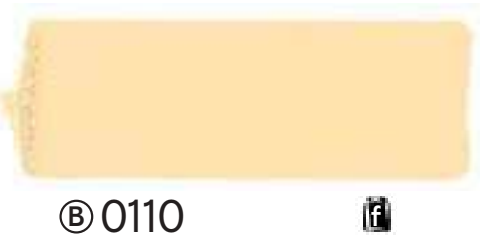
Ⓟ 0005



Ⓟ 0125



Ⓟ 0105



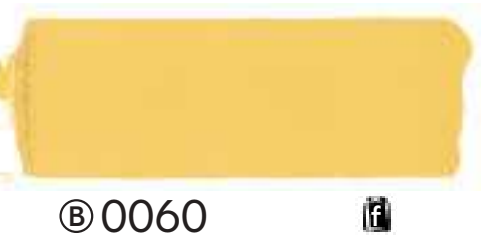
Ⓟ 0110



Ⓟ 0115



Ⓝ 0105



Ⓟ 0060



Ⓟ 0065



Ⓝ 0015



Ⓝ 0020



Ⓟ 0225



CHIARO	C1 14 64	C0 05 81	D7 15 71	F2 24 77	F7 17 76	H4 04 83	JN 01 75
MEDIO	C1 17 59	C2 07 77	D5 21 63	F1 28 73	F6 20 74	H5 05 82	HN 01 72
INTENSO	C0 21 53	C1 14 67	D2 29 53	E8 38 69	F5 30 66	H7 08 80	HN 02 70

ESEMPI DI ULTERIORI GRADAZIONI RISPETTO ALLA TAVOLOZZA DEI COLORI
(per esempio: cromie delle terre rosse e dell'ocra giallo)

TERRE ROSSE CHIARE	NARANCO	OCRA GIALLO	TERRE GIALLE	COLORI DI CALCE CHIARA	COLORI DI CALCE SCURA	TERRE VERDI	MOLINA CHIARO	MOLINA SCURO	PIetra DI SANICO
--------------------	---------	-------------	--------------	------------------------	-----------------------	-------------	---------------	--------------	------------------